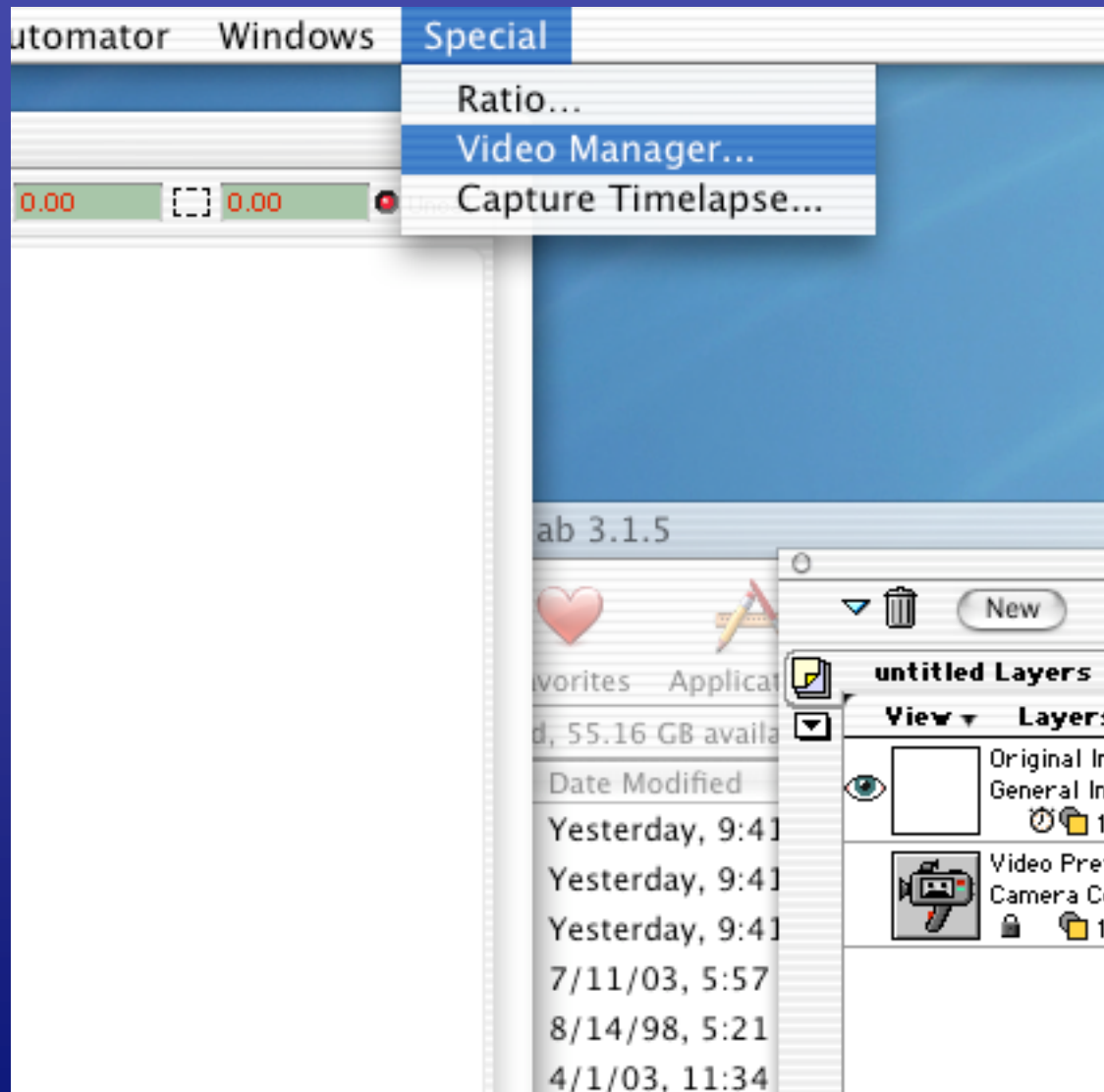
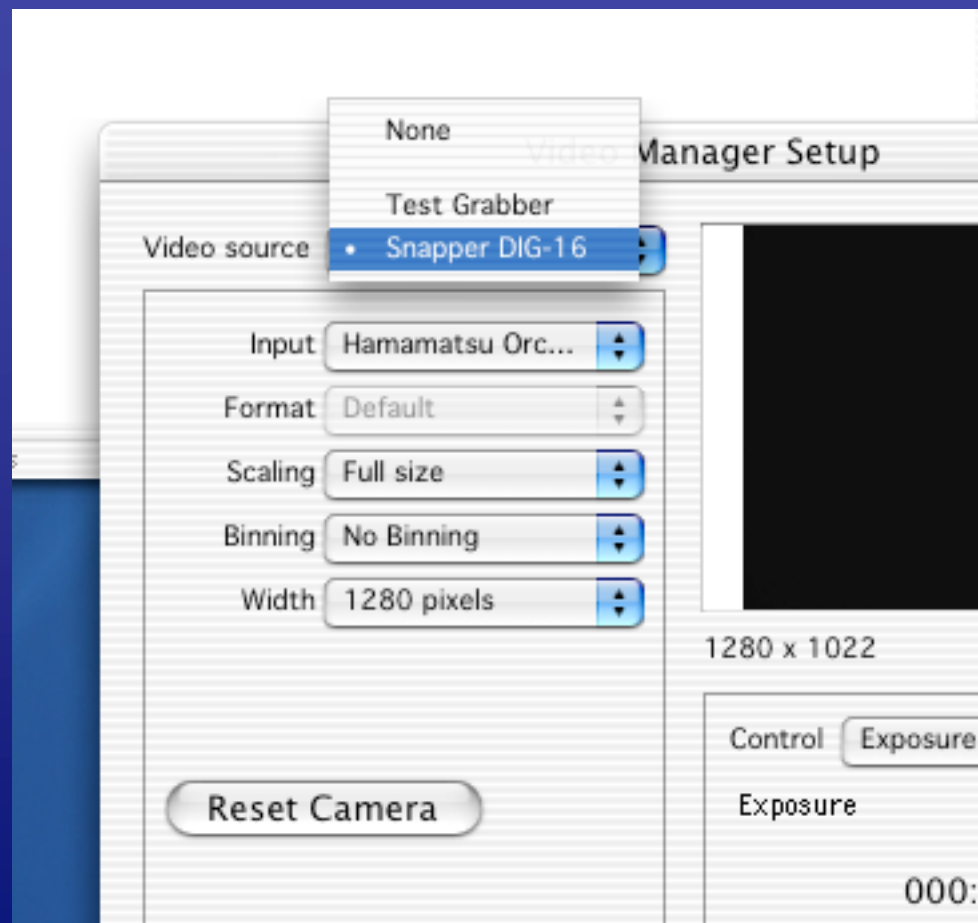


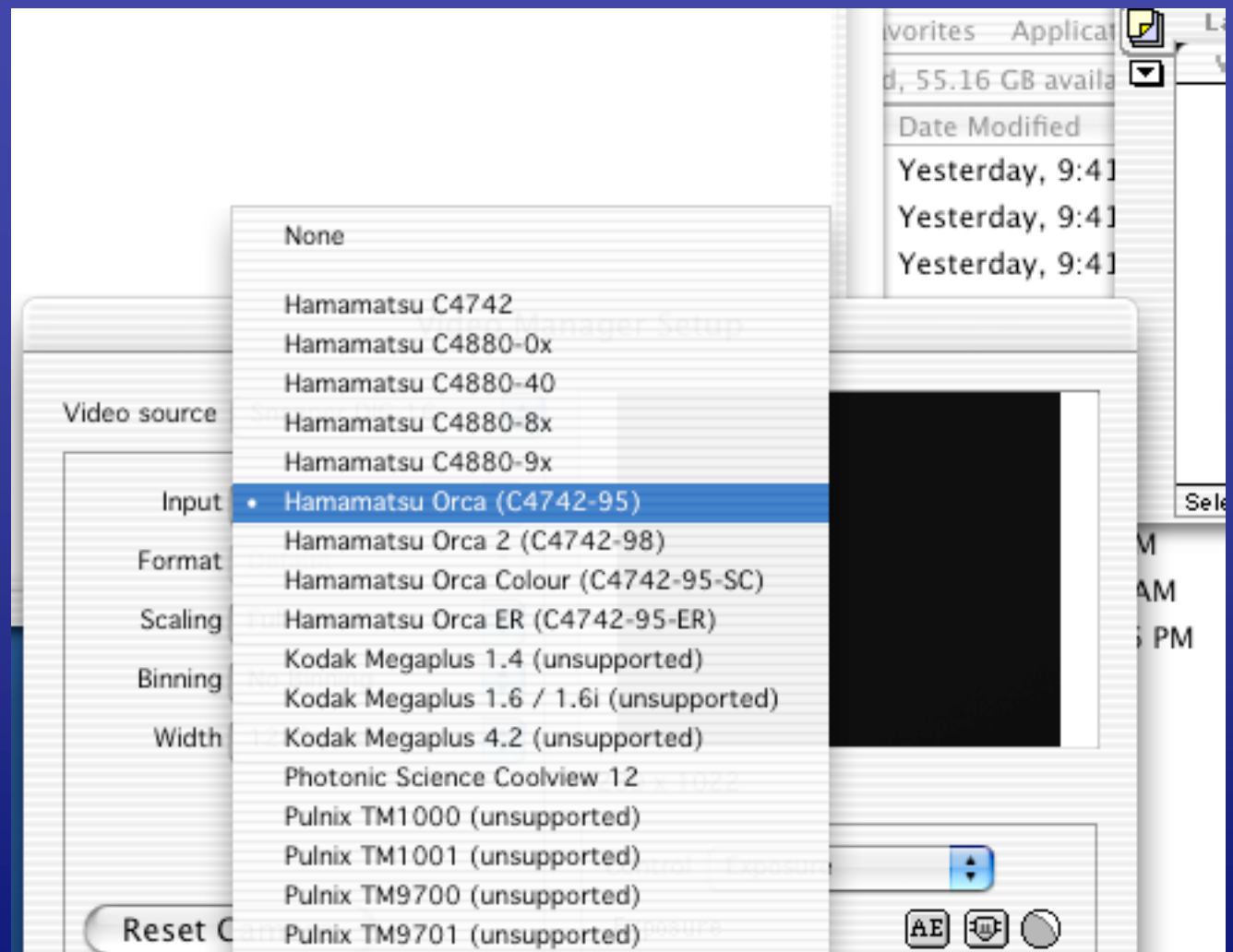
Go to applications, start openlab, and open videomanager



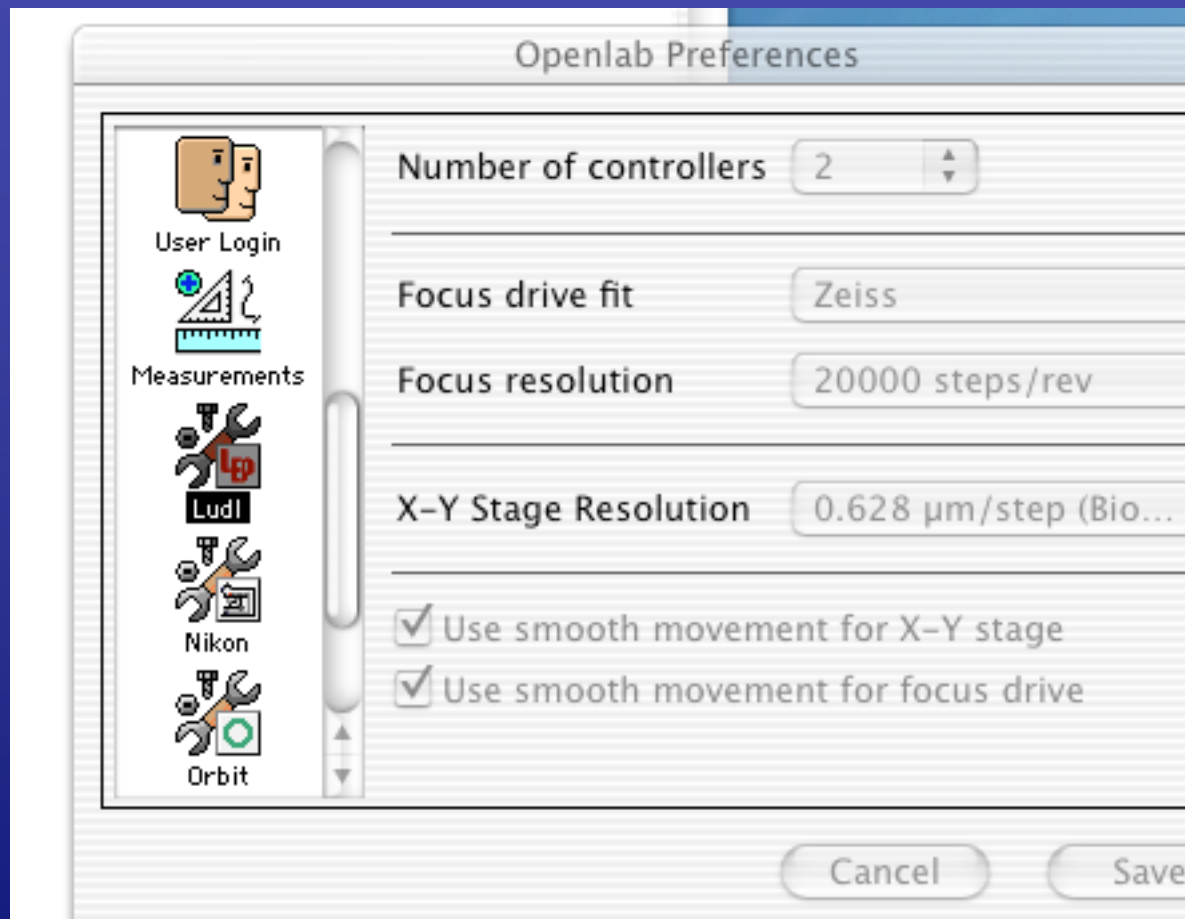
Select snapper dig-16 and all of the other settings shown here



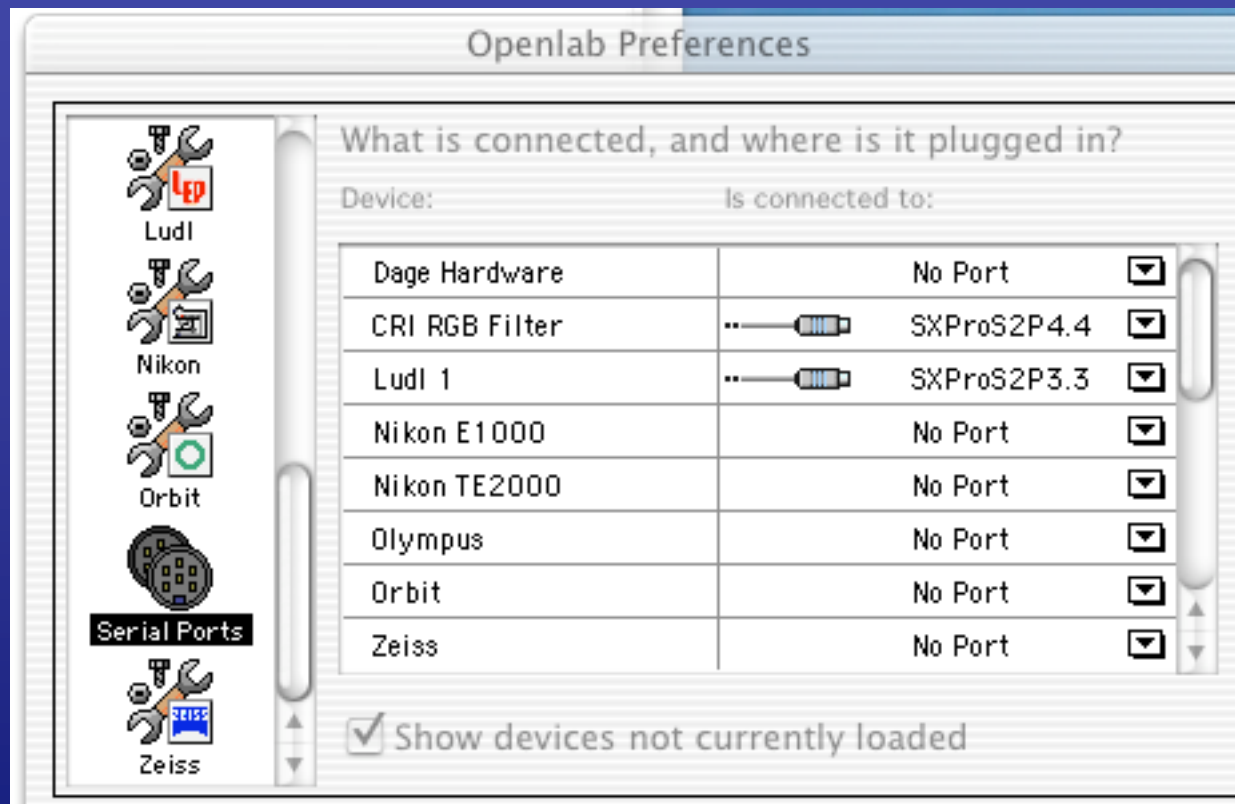
Select Orca (C4742-95)



Go to Openlab preferences and select Ludl, then select number of controllers as 2



Go to serial ports and select ports for CRI RGB as “SXProS2P4.4”
and select Ludl1 as “SXProS2P3.3”



select Ludl2 as “SXProS2P2.2”

